

# ROOM SELECTOR



CONFERENCES | MEETINGS | DINNERS | BANQUETS | EXHIBITIONS

[www.valeresort.com](http://www.valeresort.com)



## THE VALE RESORT

The Vale Resort is nestled in 650 acres of beautiful Welsh countryside yet only 3 minutes off junction 34 of the M4, with ample free parking, making it an ideal place to retreat to for some serious business.

Business delegates feature prominently on the Resort's agenda with 12 multi-functional meeting and conference suites, as well as a number of dedicated break out meeting rooms, we can comfortably accommodate from 10 to 700 delegates, all benefiting from natural daylight, air conditioning and state-of-the-art media presentation equipment.

With superb facilities and packages to suit a client's every need, we are pleased to count amongst our corporate customers such iconic brands as Heineken, Flogas, Welsh Government and Zimmer Biomet to name but a few.



OFFICIAL HOTEL

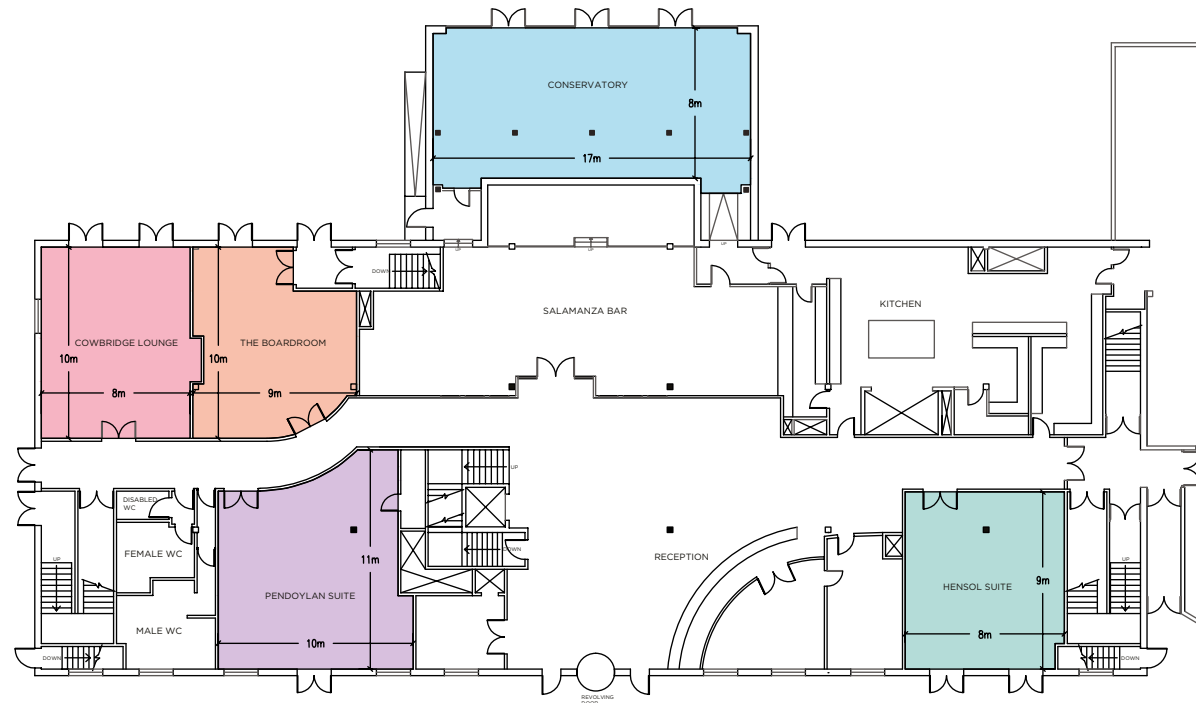


FIRST FLOOR

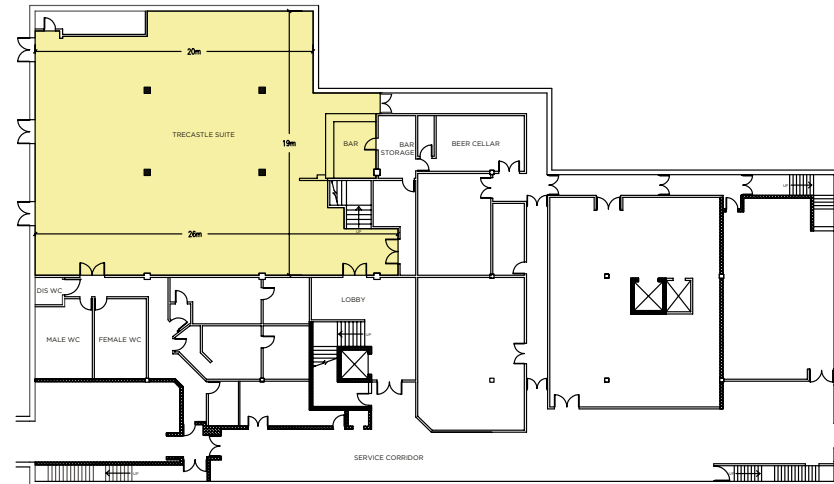
GROUND FLOOR

LOWER GROUND FLOOR

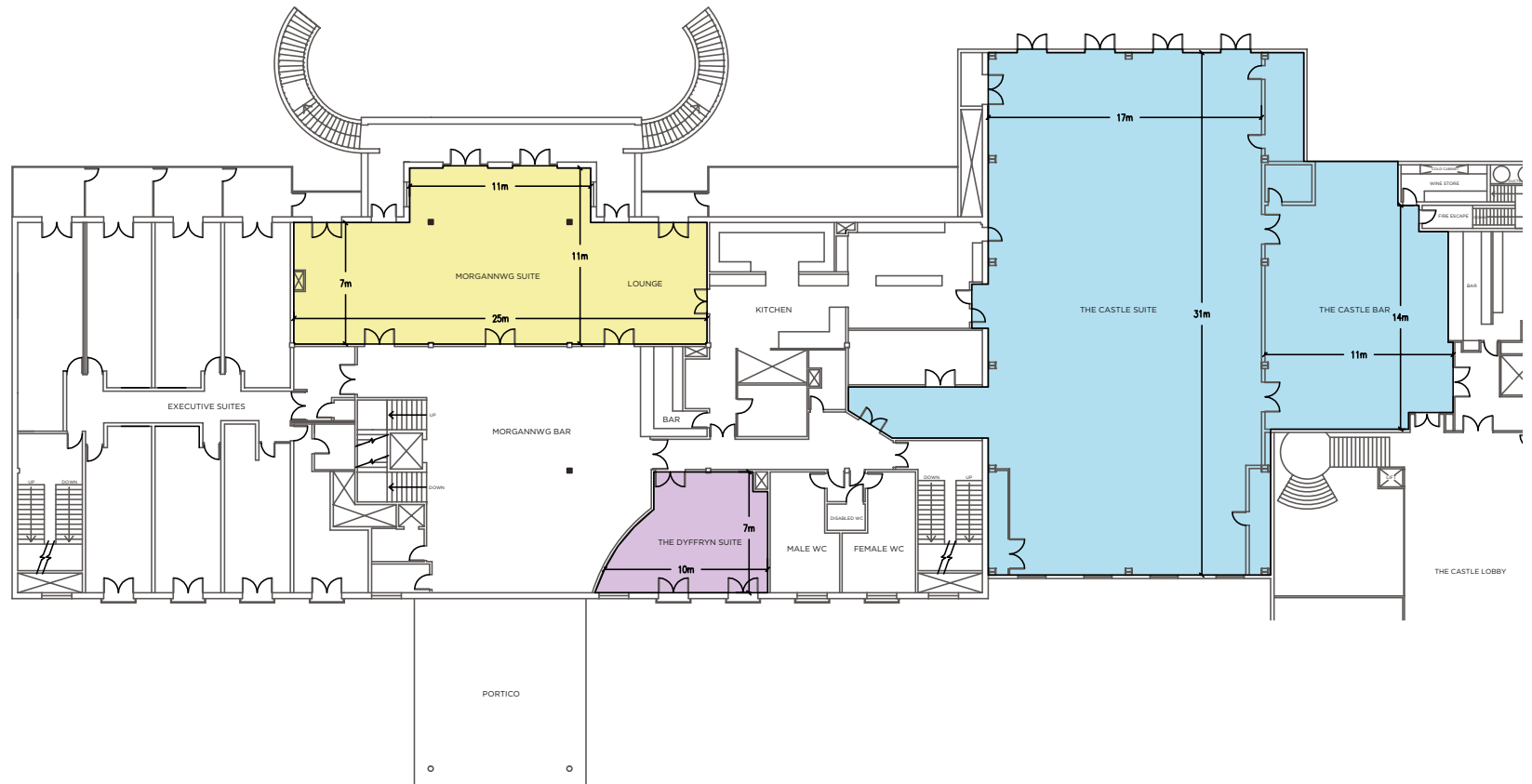
## GROUND FLOOR



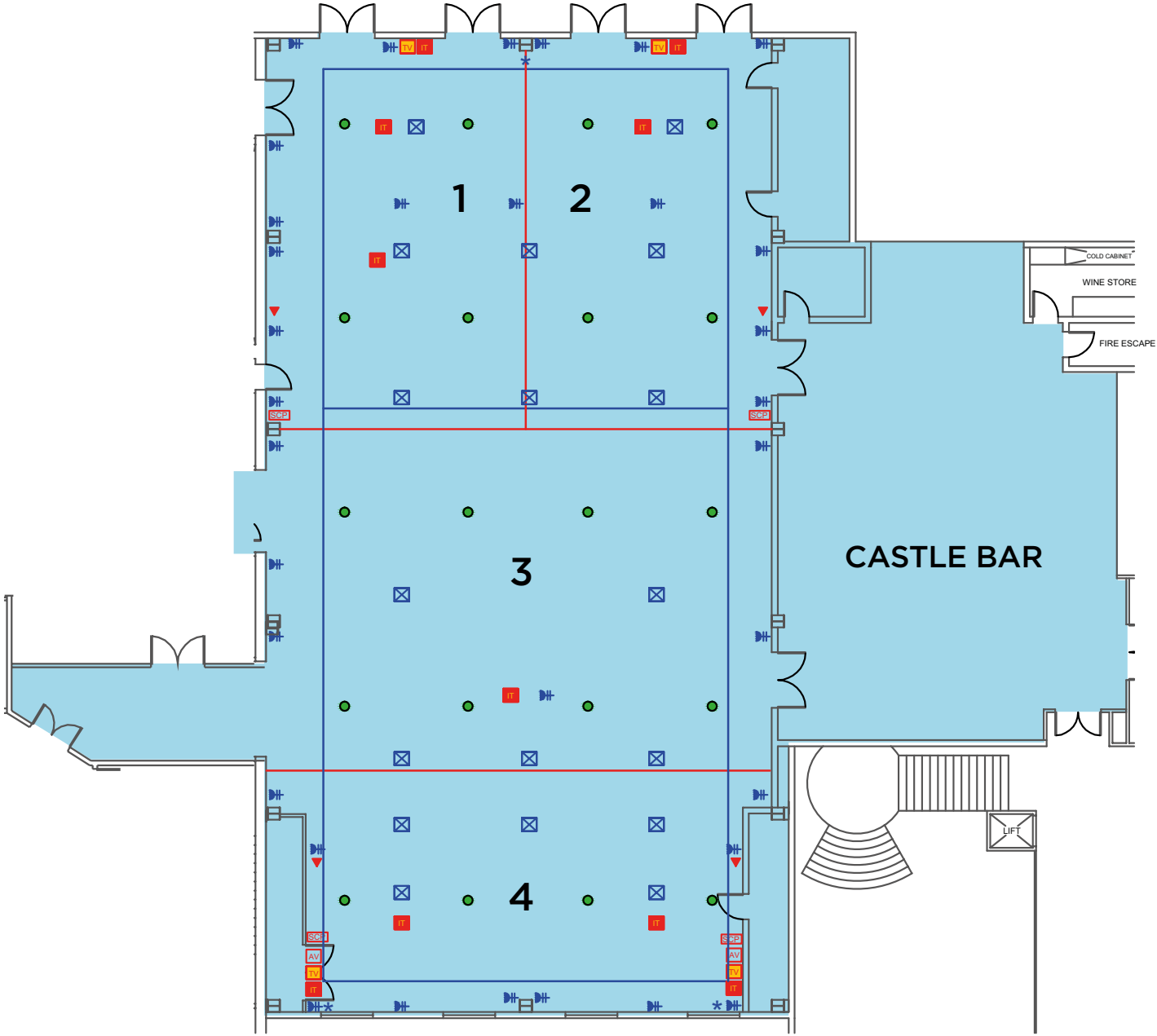
## LOWER GROUND FLOOR



FIRST FLOOR



# CASTLE SUITE FIRST FLOOR



## KEY



- Recessed Floor Socket
- Power Point
- 3 Phase Power Socket
- Projector Control & AUX
- Projector
- Projector Screen
- Ceiling Speakers
- IT Point
- Pillar
- TV Point
- Telephone Socket
- Sub Control Panel
- Moveable Wall System
- Under Floor Services Duct

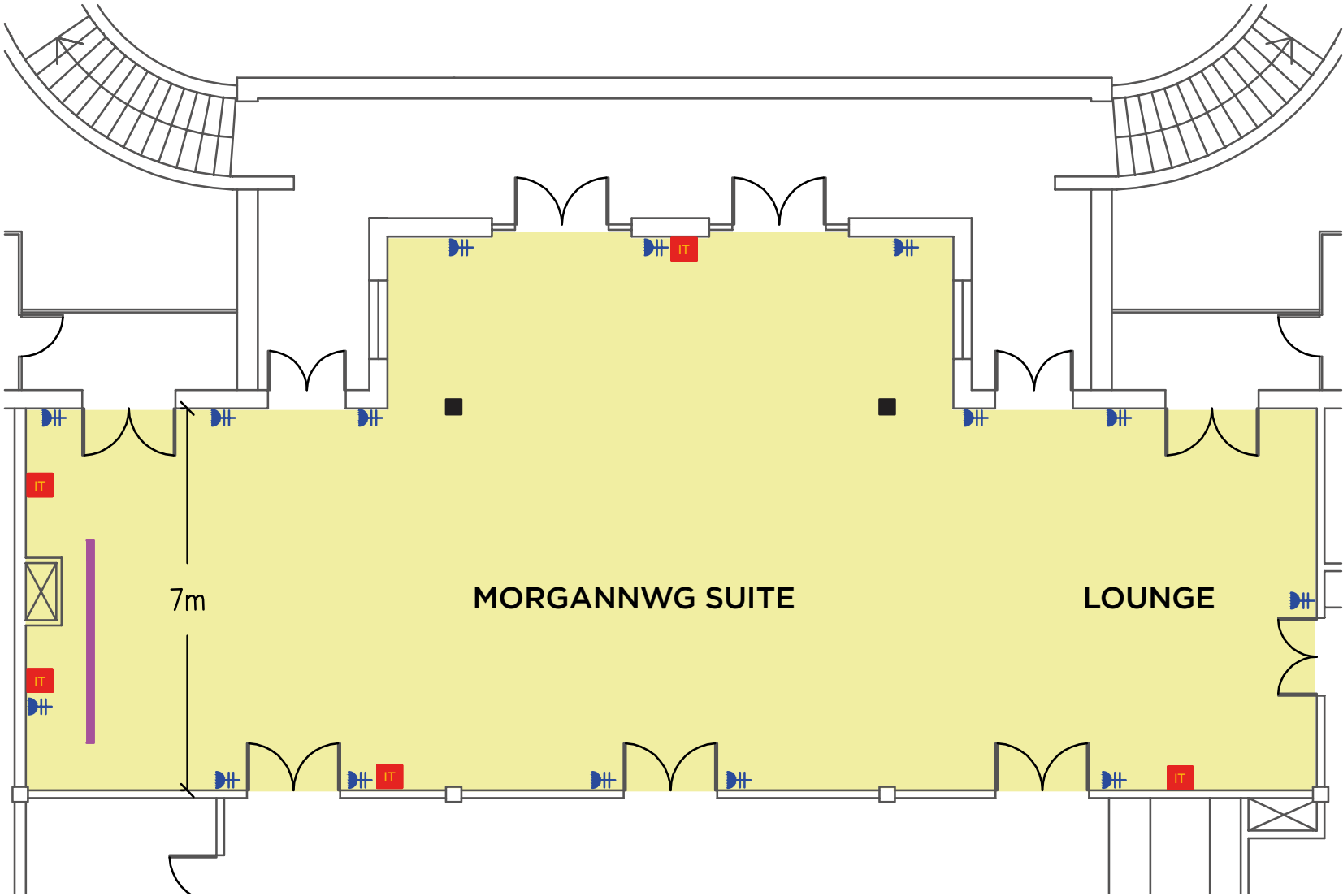




	HEIGHT (M)	LENGTH (M)	WIDTH (M)	THEATRE FRONT PROJECTION	THEATRE BACK PROJECTION	CLASSROOM	BOARDROOM	CABARET ROUNDS	DINNER	DINNER DANCE	U-SHAPE
<b>CASTLE SUITE</b>	6.00	31.00	17.00	700	550	300	-	320 (32)	480 (40)	420 (35)	-
<b>CASTLE 1</b>	6.00	12.50	8.50	70	50	40	30	50 (6)	72 (6)	60 (5)	25
<b>CASTLE 2</b>	6.00	12.50	8.50	70	50	40	30	50 (6)	72 (6)	60 (5)	25
<b>CASTLE 1 &amp; 2</b>	6.00	12.50	17.00	140	100	80	60	120 (12)	180 (15)	108 (9)	50
<b>CASTLE 3 &amp; 4</b>	6.00	12.50	17.00	300	300	120	-	200 (20)	288 (24)	240 (20)	50














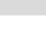
\*Number in brackets indicates maximum number of tables.

# MORGANNWG SUITE FIRST FLOOR



## KEY



-  Recessed Floor Socket
-  Power Point
-  3 Phase Power Socket
-  Projector Control & AUX
-  Projector
-  Projector Screen
-  Ceiling Speakers
-  IT Point
-  Pillar
-  TV Point
-  Telephone Socket
-  Sub Control Panel
-  Moveable Wall System
-  Under Floor Services Duct

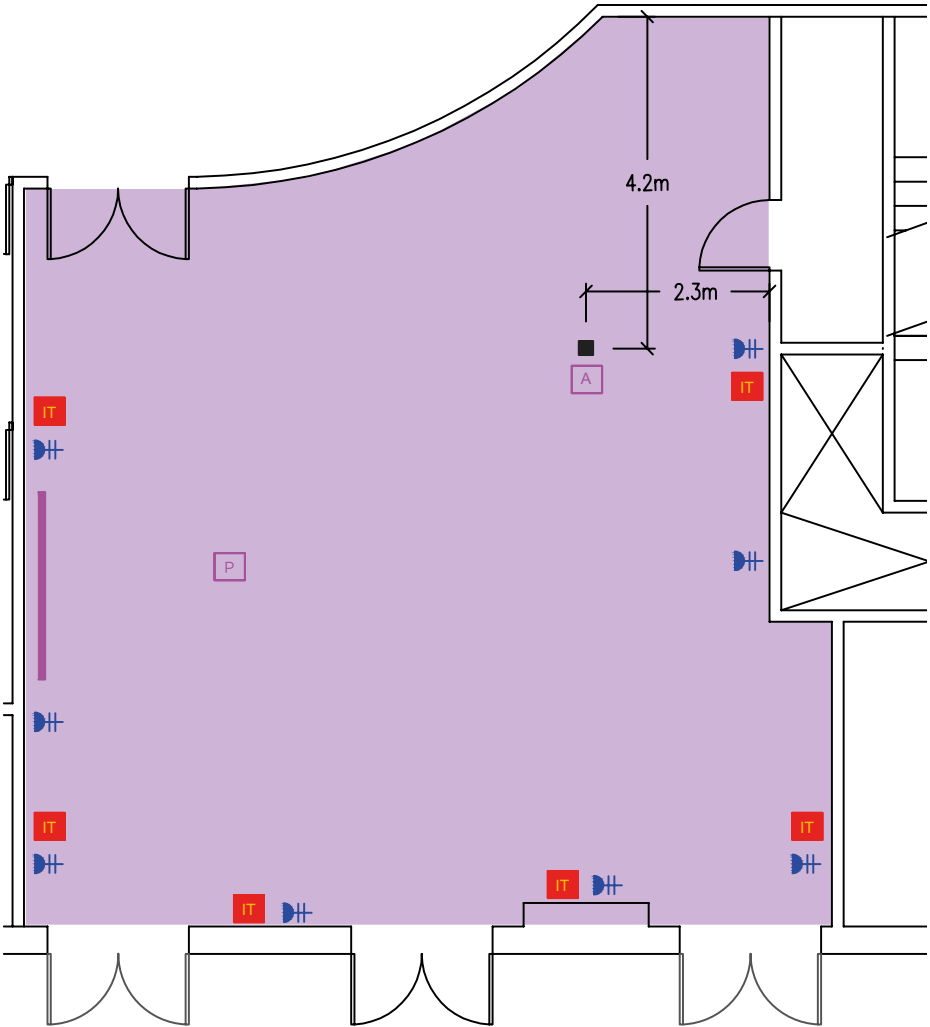




	HEIGHT (M)	LENGTH (M)	WIDTH (M)	THEATRE FRONT PROJECTION	THEATRE BACK PROJECTION	CLASSROOM	BOARDROOM	CABARET ROUNDS	DINNER	DINNER DANCE	U-SHAPE
<b>MORGANNWG SUITE &amp; LOUNGE</b>	2.75 (BAY 4.10)	25.00	11.00 MAX WIDTH IN BAY	180	180	100	56	110 (11)	168 (14)	120 (10)	30
<b>MORGANNWG SUITE</b>	2.75	18.00	7.00	150	120	60	50	80 (8)	144 (12)	96 (8)	30
<b>MORGANNWG LOUNGE</b>	2.75	7.00	7.00	30	-	20	15	20 (2)	24 (2)	-	15

\*Number in brackets indicates maximum number of tables.

# PENDOYLAN SUITE GROUND FLOOR



**KEY**

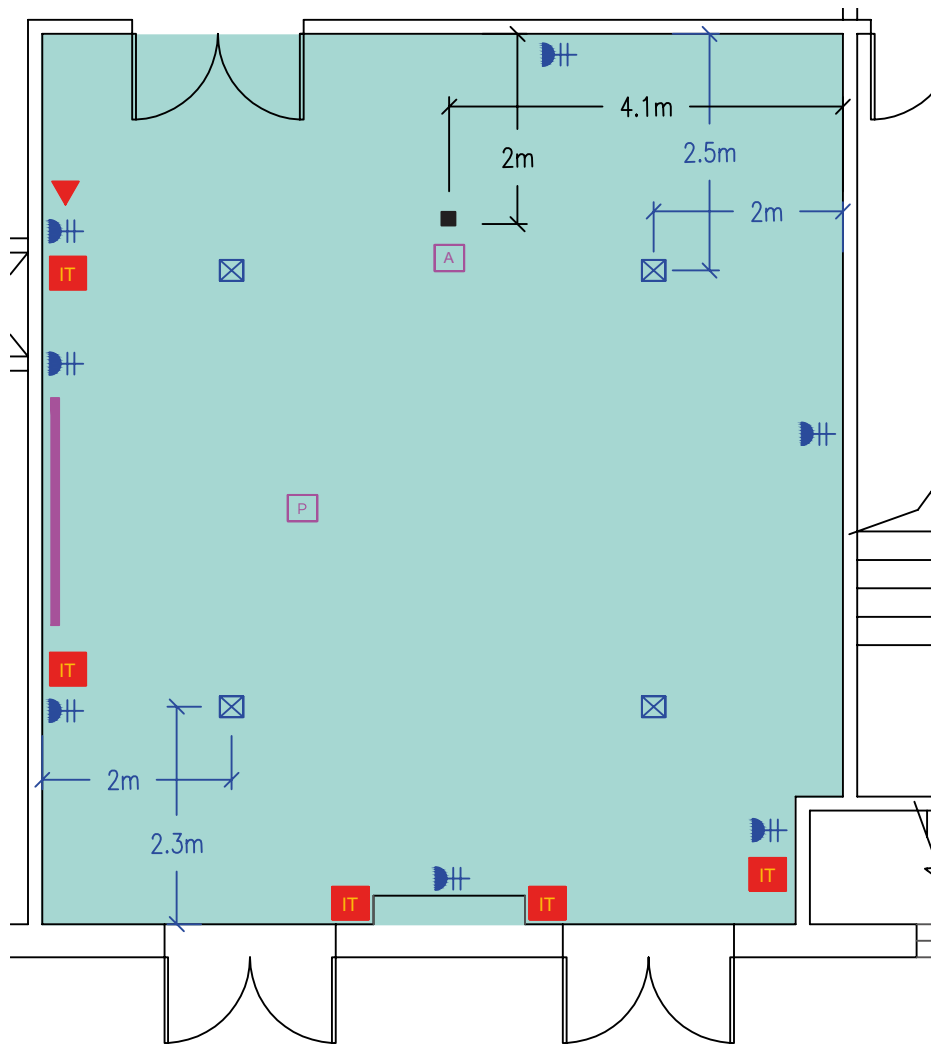
- ⊠ Recessed Floor Socket
- IT IT Point
- ⏻ Power Point
- Pillar
- \* 3 Phase Power Socket
- TV TV Point
- A Projector Control & AUX
- ▼ Telephone Socket
- P Projector
- SCP Sub Control Panel
- Projector Screen
- Moveable Wall System
- Ceiling Speakers
- Under Floor Services Duct

	HEIGHT (M)	LENGTH (M)	WIDTH (M)	THEATRE FRONT PROJECTION	THEATRE BACK PROJECTION	CLASSROOM	BOARDROOM	CABARET ROUNDS	DINNER	DINNER DANCE	U-SHAPE
<b>PENDOYLAN SUITE</b>	3.00	11.00	10.00	80	-	40	20	50 (5)	72 (6)	60 (5)	25

\*Number in brackets indicates maximum number of tables.

Oval 25 (1)

# HENSOL SUITE GROUND FLOOR



**KEY**

- ☒ Recessed Floor Socket
- IT IT Point
- ⚡ Power Point
- Pillar
- \* 3 Phase Power Socket
- TV TV Point
- A Projector Control & AUX
- ▼ Telephone Socket
- P Projector
- SCP Sub Control Panel
- Projector Screen
- Moveable Wall System
- Ceiling Speakers
- Under Floor Services Duct

	HEIGHT (M)	LENGTH (M)	WIDTH (M)	THEATRE FRONT PROJECTION	THEATRE BACK PROJECTION	CLASSROOM	BOARDROOM	CABARET ROUNDS	DINNER	DINNER DANCE	U-SHAPE
<b>HENSOL SUITE</b>	3.00	9.00	8.00	60	-	30	15	40 (4)	60 (5)	36 (3)	20
									Oval 20 (1)		

\*Number in brackets indicates maximum number of tables.



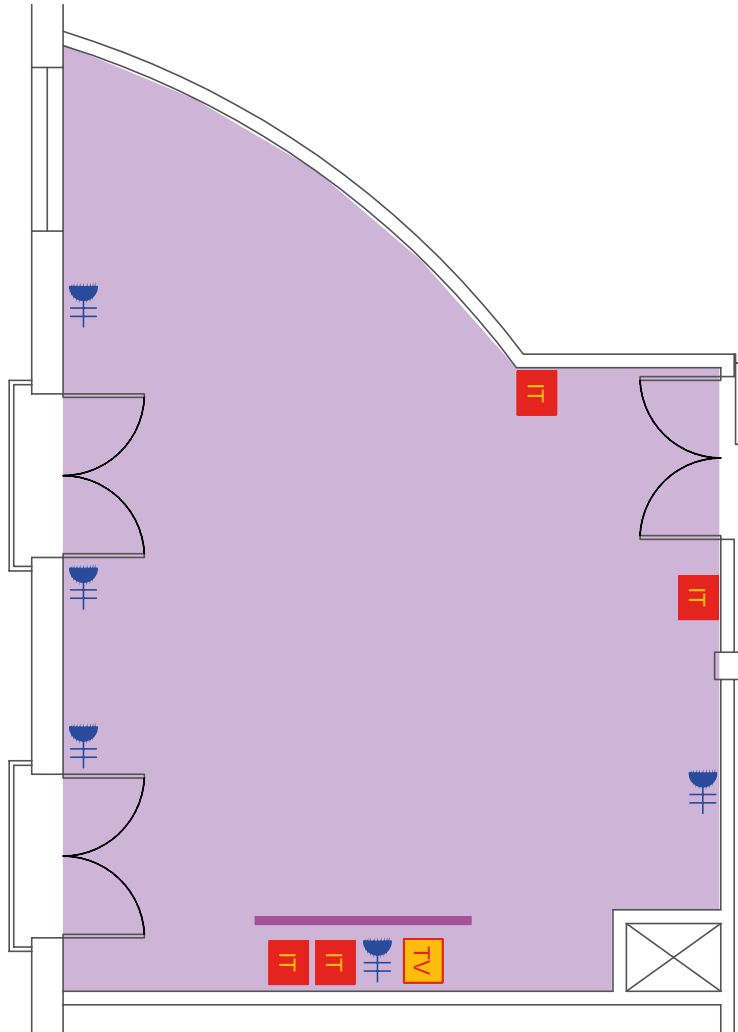




	HEIGHT (M)	LENGTH (M)	WIDTH (M)	THEATRE FRONT PROJECTION	THEATRE BACK PROJECTION	CLASSROOM	BOARDROOM	CABARET ROUNDS	DINNER	DINNER DANCE	U-SHAPE
<b>THE BOARDROOM</b>	3.15	10.00	9.00	-	-	-	16	-	16 (1)	-	-

\*Number in brackets indicates maximum number of tables.

# DYFFRYN SUITE FIRST FLOOR



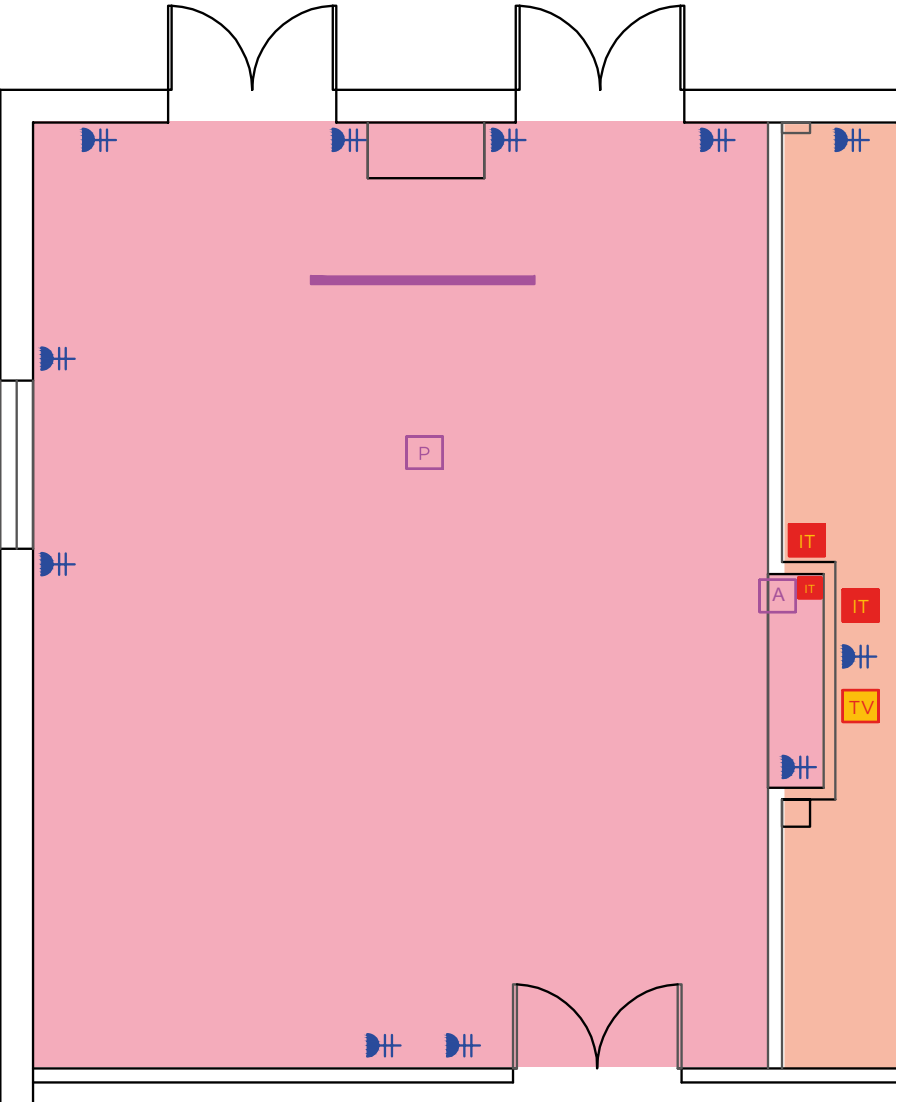
**KEY**

- ⊠ Recessed Floor Socket
- IT IT Point
- ⚡ Power Point
- P Pillar
- ⚡\* 3 Phase Power Socket
- TV TV Point
- A Projector Control & AUX
- ▼ Telephone Socket
- P Projector
- SCP Sub Control Panel
- Projector Screen
- Moveable Wall System
- Ceiling Speakers
- Under Floor Services Duct


	HEIGHT (M)	LENGTH (M)	WIDTH (M)	THEATRE FRONT PROJECTION	THEATRE BACK PROJECTION	CLASSROOM	BOARDROOM	CABARET ROUNDS	DINNER	DINNER DANCE	U-SHAPE
<b>DYFFRYN SUITE</b>	2.75	8.00	11.00	30	-	18	18	30 (3)	36 (3)	-	18
									Oval 18 (1)		















\*Number in brackets indicates maximum number of tables.

# COWBRIDGE LOUNGE GROUND FLOOR



**KEY**



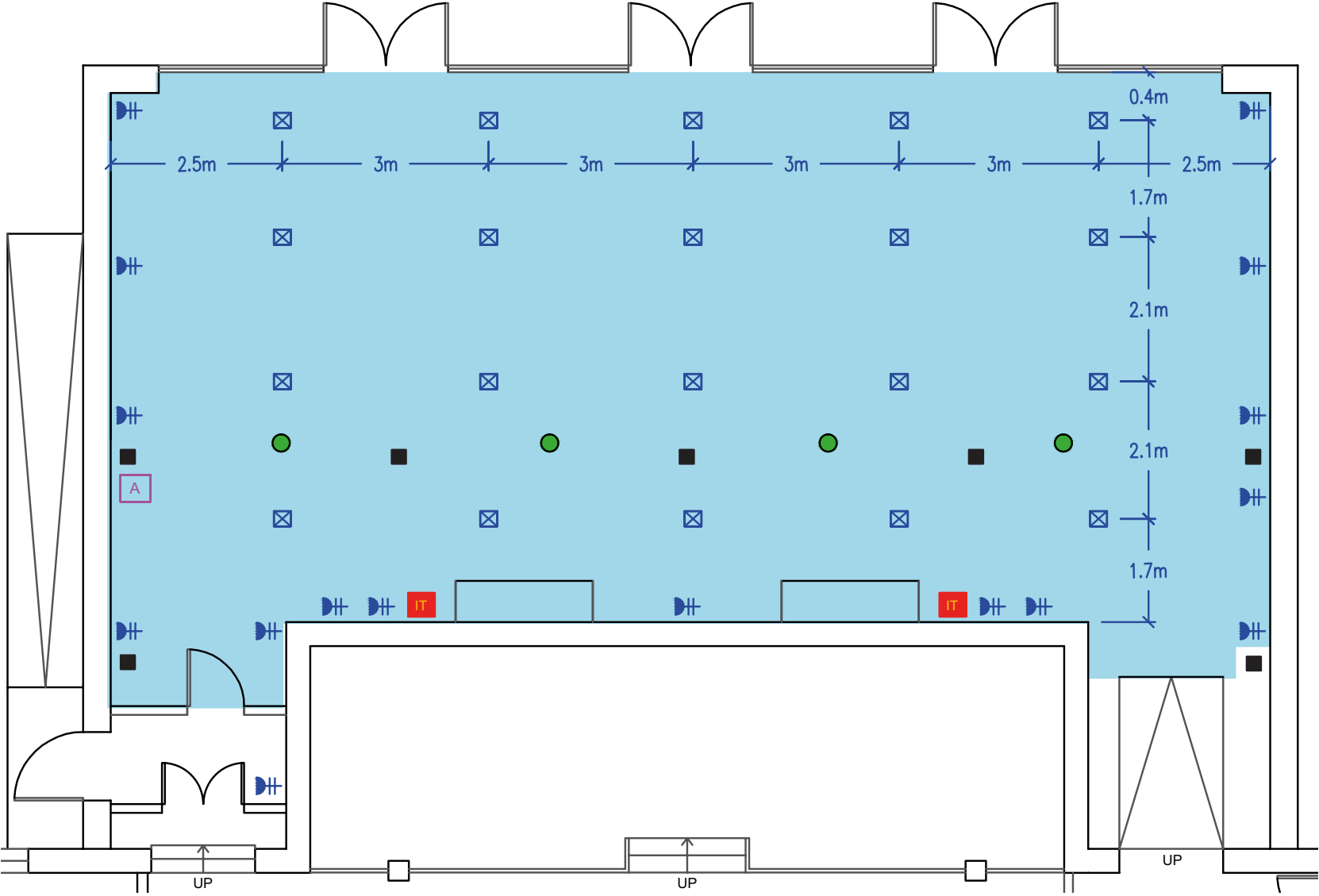
-  Recessed Floor Socket
-  Power Point
-  3 Phase Power Socket
-  Projector Control & AUX
-  Projector
-  Projector Screen
-  Ceiling Speakers
-  IT Point
-  Pillar
-  TV Point
-  Telephone Socket
-  Sub Control Panel
-  Moveable Wall System
-  Under Floor Services Duct

	HEIGHT (M)	LENGTH (M)	WIDTH (M)	THEATRE FRONT PROJECTION	THEATRE BACK PROJECTION	CLASSROOM	BOARDROOM	CABARET ROUNDS	DINNER	DINNER DANCE	U-SHAPE
<b>COWBRIDGE LOUNGE</b>	3.15	10.00	8.00	60	-	30	18	40 (4)	48 (4)	36 (3)	20
									Oval 28 (1)		

\*Number in brackets indicates maximum number of tables.



# CONSERVATORY GROUND FLOOR



## KEY



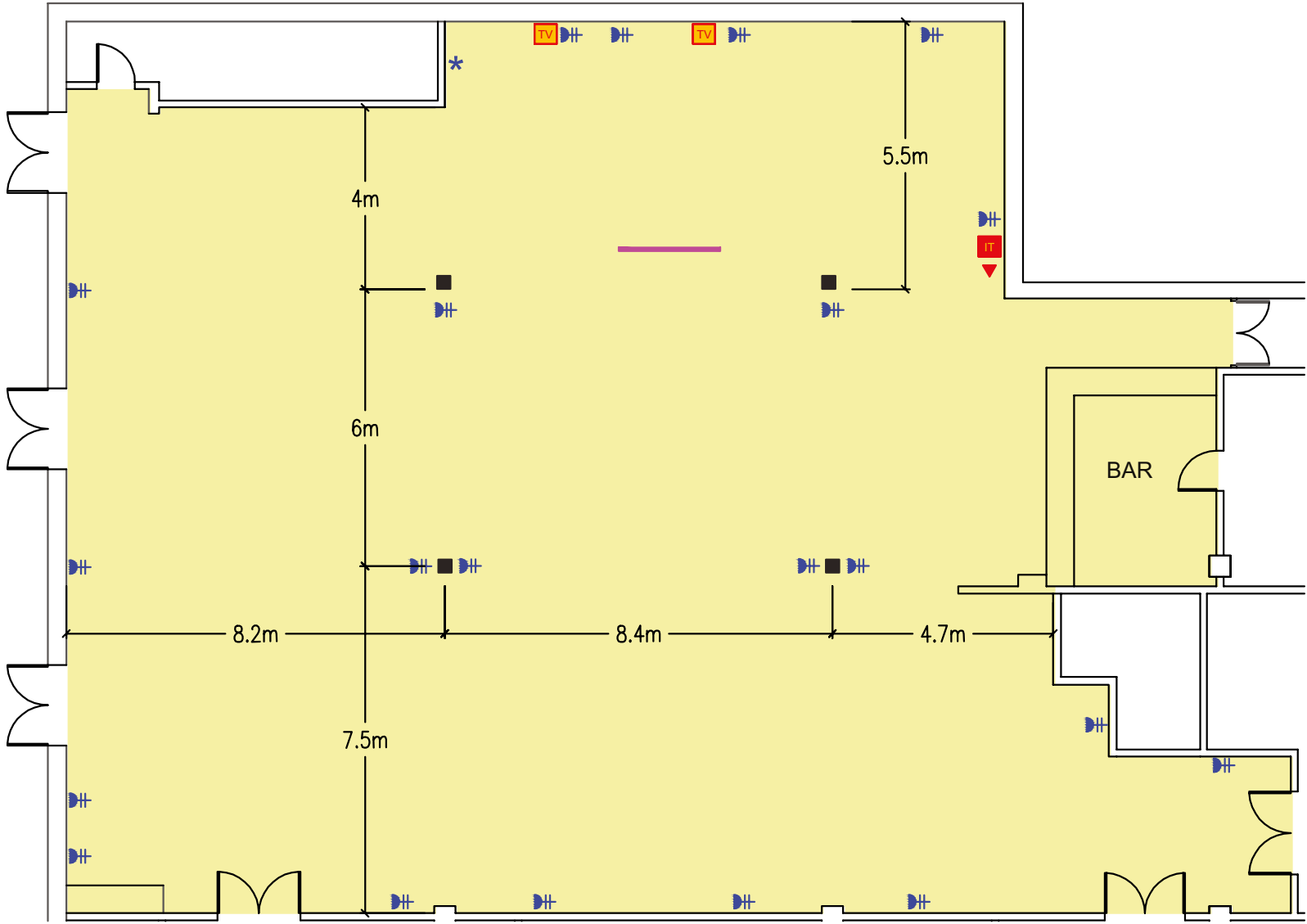
- Recessed Floor Socket
- Power Point
- 3 Phase Power Socket
- Projector Control & AUX
- Projector
- Projector Screen
- Ceiling Speakers
- IT Point
- Pillar
- TV Point
- Telephone Socket
- Sub Control Panel
- Moveable Wall System
- Under Floor Services Duct



	HEIGHT (M)	LENGTH (M)	WIDTH (M)	THEATRE FRONT PROJECTION	THEATRE BACK PROJECTION	CLASSROOM	BOARDROOM	CABARET ROUNDS	DINNER	DINNER DANCE	U-SHAPE
<b>CONSERVATORY</b>	3.10	8.00	17.00	110	-	50	24	50 (5)	84 (7)	60 (5)	18














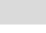
\*Number in brackets indicates maximum number of tables.

# TRECASTELL SUITE LOWER GROUND FLOOR



## KEY



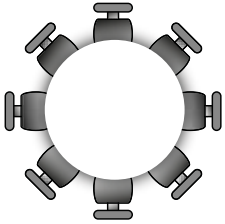
-  Recessed Floor Socket
-  Power Point
-  3 Phase Power Socket
-  Projector Control & AUX
-  Projector
-  Projector Screen
-  Ceiling Speakers
-  IT Point
-  Pillar
-  TV Point
-  Telephone Socket
-  Sub Control Panel
-  Moveable Wall System
-  Under Floor Services Duct



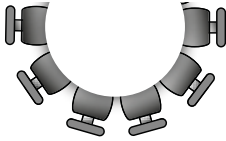
	HEIGHT (M)	LENGTH (M)	WIDTH (M)	THEATRE FRONT PROJECTION	THEATRE BACK PROJECTION	CLASSROOM	BOARDROOM	CABARET ROUNDS	DINNER	DINNER DANCE	U-SHAPE
<b>TRECASTELL SUITE</b>	2.43	20.00	19.00	100	100	-	20	100 (10)	276 (23)	240 (20)	-

\*Number in brackets indicates maximum number of tables.

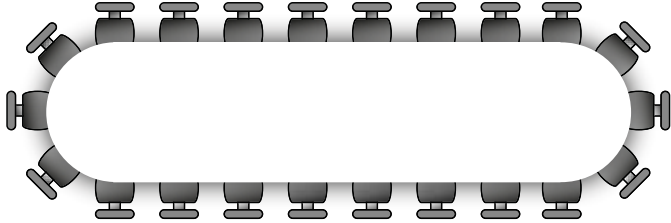
# SEATING PLAN OPTIONS



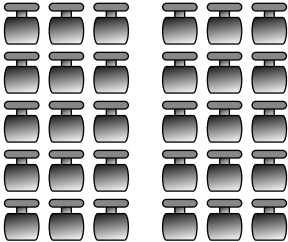
BANQUETING



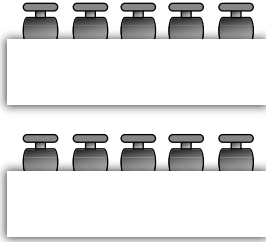
CABARET



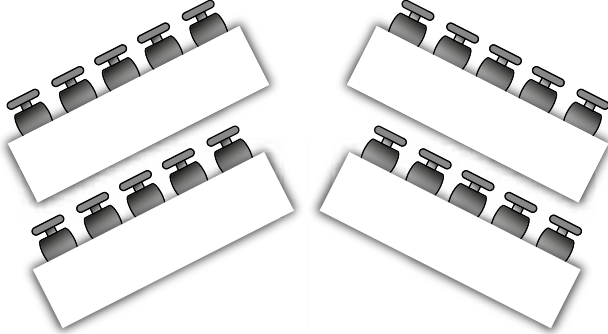
OVAL



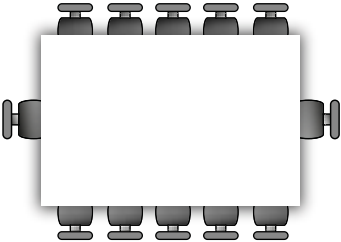
THEATRE



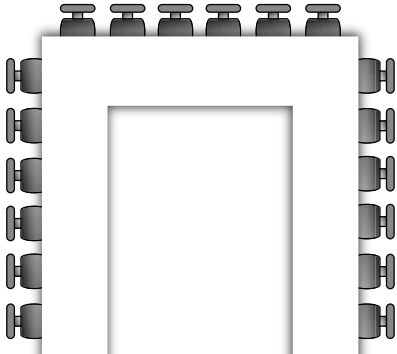
CLASSROOM



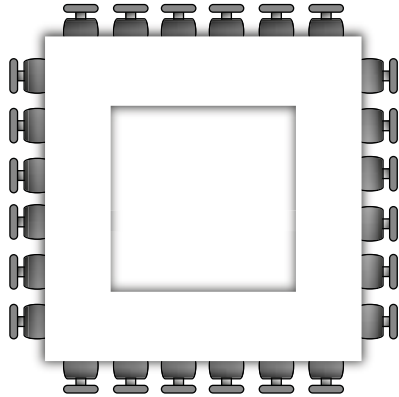
HERRINGBONE



BOARDROOM



U-SHAPE



HOLLOW SQUARE









# DIMENSIONS AND CAPACITIES

	HEIGHT (M)	LENGTH (M)	WIDTH (M)	THEATRE FRONT PROJECTION	THEATRE BACK PROJECTION	CLASSROOM	BOARDROOM	CABARET ROUNDS	DINNER	DINNER DANCE	U-SHAPE
<b>BOARDROOM</b>	3.15	10.00	9.00	-	-	-	16	-	16 (1)	-	-
<b>CASTLE SUITE</b>	6.00	31.00	17.00	700	550	300	-	320 (32)	480 (40)	420 (35)	-
<b>CASTLE 1</b>	6.00	12.50	8.50	70	50	40	30	50 (6)	72 (6)	60 (5)	25
<b>CASTLE 2</b>	6.00	12.50	8.50	70	50	40	30	50 (6)	72 (6)	60 (5)	25
<b>CASTLE 1 &amp; 2</b>	6.00	12.50	17.00	140	100	80	60	120 (12)	180 (15)	108 (9)	50
<b>CASTLE 3 &amp; 4</b>	6.00	12.50	17.00	300	300	120	-	200 (20)	288 (24)	240 (20)	50
<b>CONSERVATORY</b>	3.10	8.00	17.00	110	-	50	24	50 (5)	84 (7)	60 (5)	18
<b>COWBRIDGE LOUNGE</b>	3.15	10.00	8.00	60	-	30	18	40 (4)	48 (4)	36 (3)	20
<b>DYFFRYN SUITE</b>	2.75	8.00	11.00	30	-	18	18	30 (3)	36 (3)	-	18
<b>HENSOL SUITE</b>	3.00	9.00	8.00	60	-	30	15	40 (4)	60 (5)	36 (3)	20
<b>MORGANNWG SUITE &amp; LOUNGE</b>	2.75 (BAY 4.10)	25.00	11.00 MAX WIDTH IN BAY	180	180	100	56	110 (11)	168 (14)	120 (10)	30
<b>MORGANNWG SUITE</b>	2.75	18.00	7.00	150	120	60	50	80 (8)	144 (12)	96 (8)	30
<b>MORGANNWG LOUNGE</b>	2.75	7.00	7.00	30	-	20	15	20 (2)	24 (2)	-	15
<b>PENDOYLAN SUITE</b>	3.00	11.00	10.00	80	-	40	20	50 (5)	72 (6)	60 (5)	25
<b>TRECASTELL SUITE</b>	2.43	20.00	19.00	100	100	-	20	100 (10)	276 (23)	240 (20)	-
<b>TRE-DODRIDGE SUITE</b>	2.3	14.50	7.80	110	-	70	30	70 (7)	90 (8)	72 (6)	25

\*Number in brackets indicates maximum number of tables.



Hensol Park, Hensol, Nr Cardiff, Vale of Glamorgan, CF72 8JY | [www.valeresort.com](http://www.valeresort.com)  
Tel: +44 (0)1443 667800 | email: [sales@valeresort.com](mailto:sales@valeresort.com)